



SPREXO INTERNATIONAL



PRODUCT CATALOGUE



INDEX

INTRODUCTION

- ❖ COMPANY INTRODUCTION
- ❖ QUALITY COMMITMENT
- ❖ GLOBAL VISION
- ❖ VALUABLE EXPERIENCE

PRODUCT CATEGORIES

- ❖ EARTHING GI CHEMICAL ELECTRODES
- ❖ SOLID COPPER EARTH RODS
- ❖ CAST IRON EARTHING ELECTRODES
- ❖ G.I PIPE ELECTRODE
- ❖ EARTHING PLATES
- ❖ EARTHING COMPOUND
- ❖ CABLES AND WIRES
- ❖ CABLE CONDUCTORS
- ❖ MISCELLANEOUS CONDUCTORS
- ❖ EARTH BARS
- ❖ LIGHTING PROTECTION SYSTEM
- ❖ CABLE GLANDS
- ❖ CABLE LUGS
- ❖ CABLE TRAYS
- ❖ CONDUIT PIPES
- ❖ JUNCTION BOX
- ❖ LIGHTING POLES

CONTACT US





INTRODUCTION

Company Introduction

Sprexo International is a forward-thinking supplier and exporter of high-performance earthing solutions, proudly serving industries across the globe. As a young, agile company, we are driven by innovation and engineering excellence, continuously expanding our capabilities in research, design, and production. We cater to a wide range of sectors, including EPC, manufacturing, construction, power, solar, and government organizations.

Quality Commitment:

Quality is at the core of everything we do. Through rigorous quality control and evaluation at every stage, we ensure that each product meets international standards such as IEC. Our focus on craftsmanship and precision has earned us a reputation for delivering reliable and durable earthing solutions.

Global Vision:

With a mission to extend our global reach, we are committed to offering tailored earthing solutions that align with international standards. Our global vision is to become a trusted partner for industries worldwide, providing advanced, customizable solutions with exceptional material quality and technical support. **Sprexo International** strives to continue setting new industry benchmarks, ensuring that each client benefits from our deep technical knowledge, responsiveness, and a customer-first approach in every project.

Valuable Experience:

Working with clients on their prestigious projects has given us valuable insights and experience, allowing us to refine our processes and exceed expectations. Through collaboration on landmark projects, we have set a benchmark for ourselves in delivering unmatched service, engineering expertise, and product quality.





PRODUCT CATEGORIES

- Earthing Materials

An earthing system is essential in any electrical setup to protect against lightning, leakage currents, insulation failures, short circuits, and other electrical faults. It provides a short, direct, and low-resistance path to safely dissipate high-magnitude fault currents, ensuring the safety of people, equipment, structures, and the environment.

By redirecting lightning energy, grounding excess fault currents, stabilizing voltage, and preventing electrical shocks, earthing systems minimize risks such as fires, electrocution, and equipment damage. While the core principle of providing a conductive path to the earth is consistent, the specific design varies across applications like power stations, transmission systems, and consumer networks, depending on the system's risk factors

Earthing GI Chemical Electrodes

Product Description

Hot Dip GI + Copper Terminal Earthing Electrodes

Hot Dip Galvanized Iron Copper Terminal Earthing Electrodes is the process of creating alternative path for the flow of faulty/excessive current safely into the ground in the presence of minimal resistance or impedance Our galvanized iron earthing system offers superior product life and cost effective with free maintenance earthing.

Length Mtr	Dia (Available)				
	MM	MM	MM	MM	MM
3	100	88	65	50	40
2	100	88	65	50	40
1.5	100	88	65	50	40
1	---	---	65	50	40

AS PER CUSTOMIZED

D



SOLID COPPER EARTH RODS

Solid Copper Earth Rod:

Sprexo International solid copper rods are highly conductive, hard drawn from 99.99% pure copper cathodes. They are ideally used in conditions where soils are with high salt and moisture content.

Tin plating is also done to reduce the risk of oxidation and to increase the life of the rod. Physical connection to the rod can be done by mechanical clamps, compression or exothermic welding system.

Diameter	Length
15 mm	1200 mm
15 mm	1500 mm
15 mm	1800 mm
15 mm	2400 mm
15 mm	3000 mm
20 mm	1200 mm
20 mm	1500 mm
20 mm	1800 mm
20 mm	2400 mm
20 mm	3000 mm

Complies BS EN 50164, IEC 62561, UL467

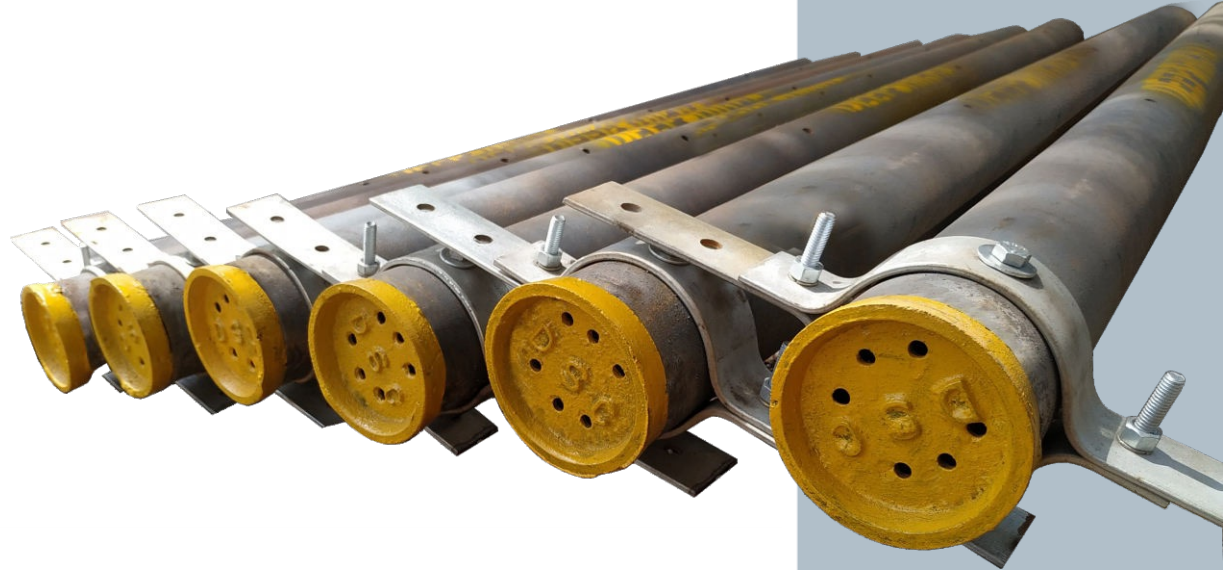
Solid Copper Earth Electrodes Externally threaded:

Length	Thread Diameter	Rod Diameter
1200mm	5/8"	14.2mm
1500mm	5/8"	14.2mm
1800mm	5/8"	14.2mm
2400mm	5/8"	14.2mm
3000mm	3/4"	14.2mm
1200mm	3/4"	17.2mm
1500mm	3/4"	17.2mm
1800mm	3/4"	17.2mm
2400mm	3/4"	17.2mm
3000mm	3/4"	17.2mm



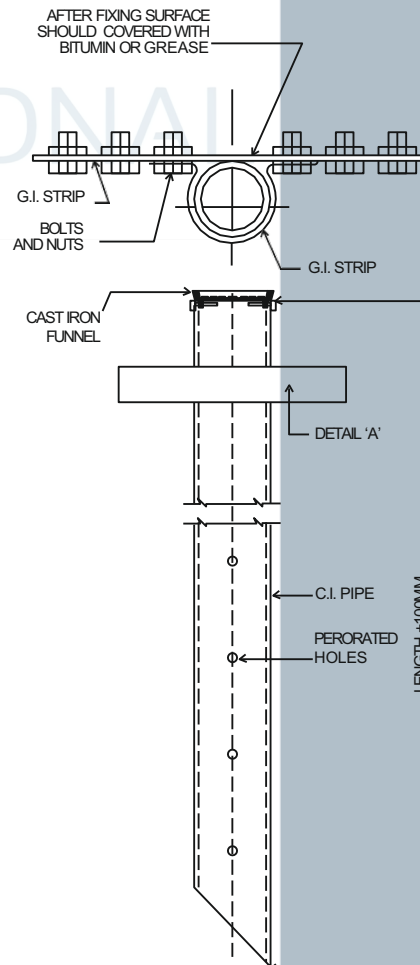
CAST IRON EARTHING ELECTRODES

Centrifugally Cast Iron Pipe with metal molds, molten metal is pour into the mold to uniformly distributed metal over the interior of the mold surface by the centrifugal force generated. We are enclosing attachments like, Single Flange, Hot Dip Galvanized Clamp, Cast Iron Funnel with Casted Mesh, Alternate Hole & Taper Cut along with Accessories, Back Fill Compound & Earth Pit Covers/ Manhole Covers with Frame in various with 12 s as per drawing specification for grounding Electrical Systems.



HT EARTHING						
DN	OD	THICKNESS	LENGTH			
100	114	7	2000	2500	2750	3000
100	126	10	2000	2500	2750	3000
100	126	13	2000	2500	2750	3000
150	170	10	2000	2500	2750	3000

LT EARTHING						
DN	OD	THICKNESS	LENGTH			
75	82	3.5	1800	2000	2500	2900
100	108	4.0	1800	2000	2500	2900
150	160	5.0	1800	2000	2500	2900



G.I PIPE ELECTRODE

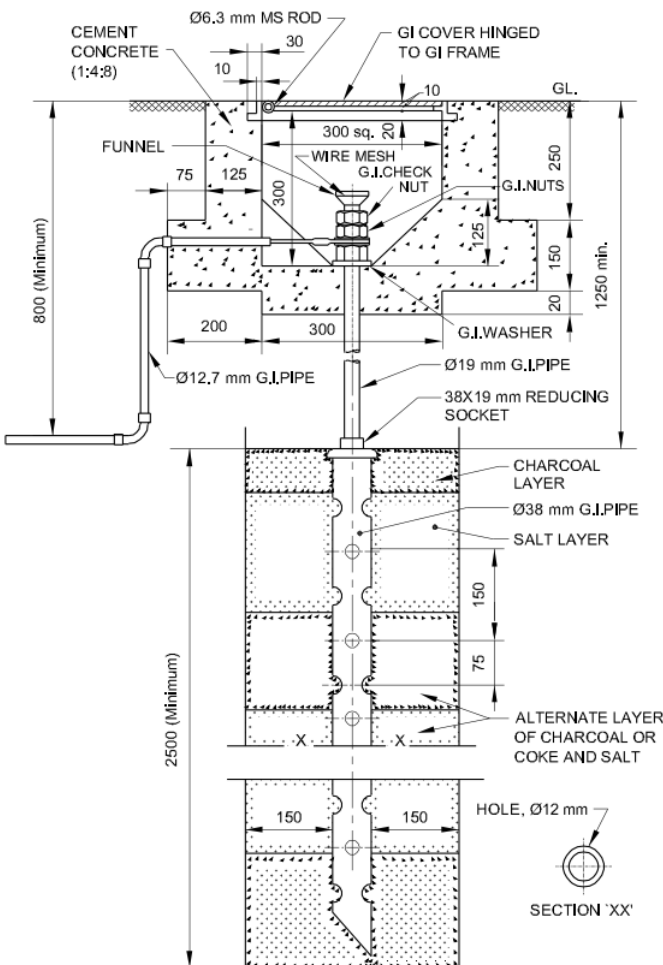


Pipe Earthing is one of the most common earthing techniques. The pipe earthing uses a galvanized iron (GI) pipe, and the dimension of the GI pipe used for a structure depend mainly on the magnitude of possible current and the soil type.

The GI pipe is perforated along its length and has a tapering end. It has a terminal clamp on the top end from which the earth wire connections are made.

The GI pipe is placed vertically deep into the soil and requires regular watering to maintain the resistivity of the soil.

Length	Terminal	Pipe Dia mm	Pipes Dia Inches
1Mtr, 2Mtr, 3Mtr	50*6	50	2"
1Mtr, 2Mtr, 3Mtr	50*6	65	2 1/2"
1Mtr, 2Mtr, 3Mtr	50*6	100	4"



NOTE: DIMENSIONS ARE IN mm UNLESS OTHERWISE SPECIFIED.

PIPE EARTHING

ONAL



EARTHING STRIPS



We offer a wide variety of GI Earthing Strips that are well appreciated for features like high tensile strength, corrosion free and durable finishes. Our strips are in great demand due to their durability and high reliability. Our range is widely demanded in the global market owing to their striking features such as electrical and thermal conductivity. Available in different with 12 s, these earthing strips are also supplied by us as per clients' requirements and specifications. Our range can be availed by our clients at market leading price.



GI Earthing Strip

Material: Mild Steel Surface

Finish: GI/HDG

with 12 : Ranging from length 3 mtr to 6 mtr

Thickness:3mm to 20 mm

Width: 10 mm to 75 mm

Application: Earthing purpose

**As per customers request.*

EXO
ERNATIONAL



Copper Earthing Strip

Material: Copper 99.9% pure copper

Form: Strip/Coil

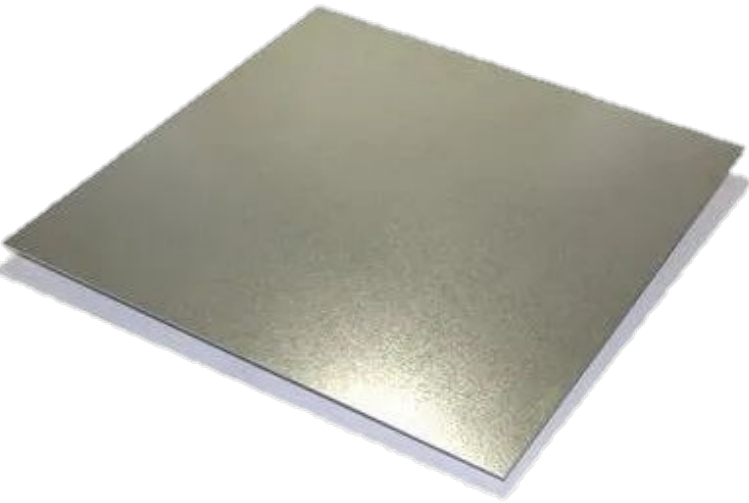
with 12 : Ranging from length 5 mtr to 6 mtr

Thickness:2mm to 12 mm

Width: 5 mm to 75 mm Application: Earthing purpose

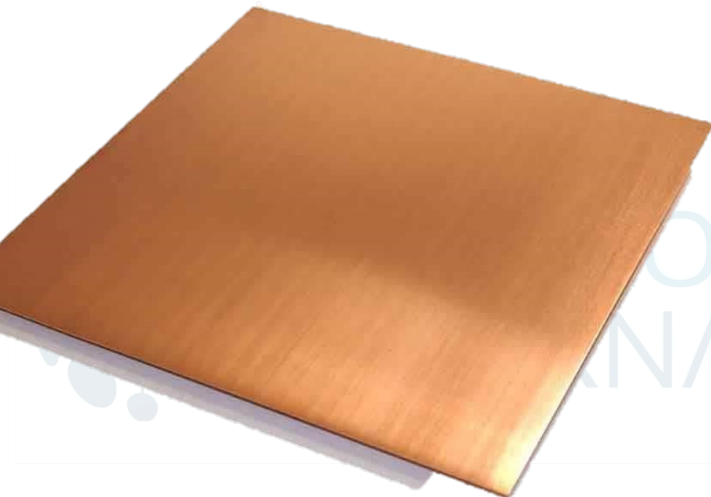
**As per customers request.*





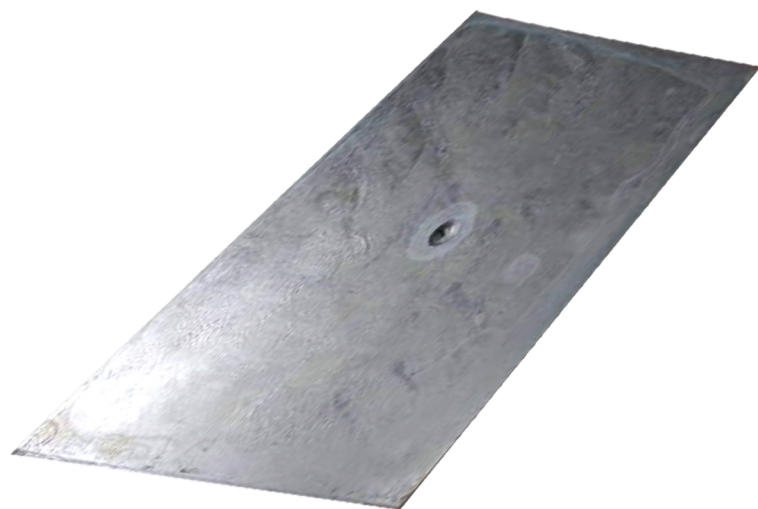
G.I Plate

Material: Copper
Form: Strip/Coil
with 12 : Ranging from length 5 mtr to 6
mtr Thickness: 3 mm to 12 mm
Width: 5 mm to 75 mm
Application : Earthing purpose
**As per customers request.*



Copper Plate

Material: Copper
Form: Strip/Coil
with 12 : Ranging from length 5 mtr to 6
mtr Thickness: 3 mm to 12 mm
Width: 5 mm to 75 mm
Application: Earthing purpose
**As per customers request.*



Cast Iron Plate

Material: Cast Iron
with 12 : 600 mm x 600 mm Thickness
Width: 5 mm to 75 mm
Application: Earthing purpose
**As per customers request.*



BACKFILL EARTHING COMPOUND

Keeping in mind ever-evolving requirements of our respected clients, we are offering a premium quality range of Earthing Backfill Compound. The Earthing Backfill Compound is made from the accurate combination of natural earth minerals. Our range of Earthing Backfill Compound is highly demanded in various industries owing to its qualitative features. Some of these industries include heavy-duty machinery, chemical, electrical, power, etc.

This compound has high conductivity and corrosion resistance and long-lasting moisture absorbing & retaining power. Further, the Earthing Backfill Compound helps to reduce the resistivity of soil, fast dissipation of fault current, minimal fluctuation of Ohmic value, etc. All these features and uses make our compound a demanded product in the industry.



Backfill Earthing Compound

Application – Industrial

Packaging Type - Bag

Weight - 25kg

Material - Analytical Grade, Reagent Grade

Earthing Charcoal And Salt:

We know that charcoal powder is a carbon content substance it acts a semiconductor and salt is soluble in water, earth bit after finishing time we put water required, now salt is connected the earth electrode and charcoal powder and ground. Around 3:1 ratio of charcoal & salt used in one earth pit for better result. Our provided charcoal is highly acclaimed in electrical industries that are used along with salt for earthing purpose that gives a temporary solution for getting low resistivity. Earthing Charcoal & Salt is used in conventional pipe & plate earthing.



Features

- Effectiveness
- Low moisture content
- Purity

INSPECTION CHAMBERS



HDPE Earth Pit Cover is the outcome of our innovative technology. This pit covering has extensive applications in different industries for a number of reasons. This light weight pit cover can bear heavy load. Moreover, it can be shifted to other location easily. These are the main reasons why this HDPE product is preferred over its concrete or cast iron made counterparts.

Square type: Diameter 300 mm x 300 mm (Top)

- Medium type: (round type) with 12 325 mm at bottom, 255 mm at top and 255 mm in height
- Small with 12 Earth pit cover: with 12 250 mm height, 250 mm at bottom and 200 mm at top (round type)
- Provided plastic earthing covers have been produced from standard grade HDPE material.



FRP Earthpit Cover.
Load Bearing Capacity 40 tonnes.
Available in all with 450x450 mm,
500x500 mm, 600x600 mm etc.



CAST IRON INSPECTION CHAMBERS

Each manhole cover had to design and manufactured to meet site requirement for different with 12 s and different load capacity, as under-

A) LIGHT DUTY LD- Rectangular, Square or Circular Solid Types
Suitable for use within residential and institutional complexes areas with pedestrian but occasional light vehicle traffic. These covers are also used for 'Inspection chambers'.

B) MEDIUM DUTY MD-Circular or Rectangular Types
Suitable for use in service lane/ road on pavements for use under medium duty vehicular traffic including for car parking areas.

C) HEAVY DUTY HD- Circular Square or Rectangular Types
Suitable for use in institutional/commercial areas/carrageways/city trunk roads/ bus terminals with heavy duty vehicular traffics of wheel load between 5 to 10 tones like buses trucks and parking areas and where the manhole chambers are located in between the pavement and the middle of the road.



CAST IRON MANHOLE COVERS & FRAME IN LIGHT DUTY				
Sr. No.	Description	with 12 (mm)	Clear Opening (mm)	Weight (kg)
1	Square Manhole Cover	300 X 300	225 X 225	4
2	Square Manhole Cover	300 X 300	300 X 300	7
3	Square Manhole Cover	450 X 450	380 X 380	10
4	Square Manhole Cover	450 X 450	450 X 450	16
5	Square Manhole Cover	450 X 450	450 X 450	20
6	Square Manhole Cover	600 X 600	505 X 505	22
7	Square Manhole Cover	600 X 600	596 X 596	25
8	Square Manhole Cover	450 X 450	450 X 450	32
9	Square Manhole Cover	600 X 600	596 X 596	32
10	Square Manhole Cover	600 X 600	590 X 590	50
11	Rectangular Manhole Cover	450 X 600	373 X 525	15
12	Rectangular Manhole Cover	450 X 900	495 X 900	50
13	Rectangular Manhole Cover	450 X 900	495 X 900	55
14	Rectangular Manhole Cover	600 X 900	600 X 900	75
15	Hinged Type Manhole Cover	450 X 450	377 X 377	10
16	Hinged Type Manhole Cover	600 X 600	595 X 595	30
17	Hinged Type Manhole Cover	600 X 600	590 X 590	35



MHC 18X36- 50 KG



MHC 450X450- 10 KG



MHC 450X600- 15 KG



MHC 300 X 300- 4 KG



MHC HINGED 18X18- 10 KG



MHC HINGED 24X24- 22 KG

CAST IRON MANHOLE COVERS & FRAME IN HEAVY DUTY				
Sr. No.	Description	with 12 (mm)	Clear Opening (mm)	Weight (kg)
1	Rectangular Manhole Cover	600 X 900	600 X 900	175
2	Rectangular Manhole Cover	600 X 900	600 X 900	250
3	Circular Manhole Cover	560(mm)/22"	505	150
4	Circular Manhole Cover	560(mm)/22"	505	175
5	Circular Manhole Cover	560(mm)/22"	505	208
6	Circular Manhole Cover	560(mm)/22"	505	250



MHC CIRCULAR SHAPE- 175 KG



MHC CIRCULAR SHAPE- 50 KG



GI-WIRES

Specifications:

Diameter :- 1.60mm - 6.30 mm

Tensile Strength :- 45kg/sq. mm to 180 kg/sq. mm

Standard :-BS 183/ IS 12776

Thickness :-6SWG to 14 SWG

EARTH-WIRES

Specifications:

Specifications: with 12 Range: 1.60 mm to 6.30 mm diameter

Tensile Strength Range: 45 kg/sq. mm to 180 kg/sq. mm

Standard : As per BS 183/IS 12776



COPPER-WIRES

Specifications:

Diameter :- 0.02 - 1 mm, 1-3 mm

Wire Gauge :- 0-5, 5-10, 20-25

Standard :- EN 13601: 2002, EN 13602: 2002

Purity :-Copper - 99.9%

Conductor Type :-Stranded



CABLES AND WIRES

COPPER INSULATED WIRES



1. **Conductor** : Stranded Class 2 - Annealed Plain / Tinned Copper / Aluminium - IS:8130 / IEC 60228/ BS6360.
2. **Conductor Screen** : Extruded semi-conducting compound – IS:7098 Part 2, IEC:60502 Part – 2, BS:6622, BS:7835.
3. **Insulation** : XLPE – IS : 7098 Part 2, IEC:60502 Part – 2, BS:6622, BS:7835.
4. **Insulation Non-metallic Screen** : Extruded semi-conducting compound – IS:7098 Part 2, IEC:60502 Part – 2, BS:6622, BS:7835.
5. **Insulation Metallic Screen** : Copper Wire / Tape or Aluminium Wire / Strip – IS:7098 Part 2, IEC:60502 Part – 2, BS:6622, BS:7835.
6. **Fillers** : Non Hygroscopic PVC* / Polypropylene Fiber to maintain roundness of cable.
7. **Inner sheath/Bedding** : PVC ST 2 as per IS:7098 Part 2, IEC:60502 Part – 2, BS:6622, LSOH to BS:7835.
8. **Armour** : IS:7098 Part 2, IS: 3975, IEC:60502 Part – 2, BS:6622, BS:7835.
9. **Outer Sheath** : PVC ST 2, FR, FRLS as per IS:7098 Part 2, IEC:60502 Part – 2, BS:6622, LSOH to BS:7835.

Flame Retardant (FR), Flame Retardant Low Smoke (FRLS) and Low Smoke Zero Halogen & Flame Retardant (LSOH) Sheathed HT XLPE cables are also manufactured.

- 1) **Voltage Grade** : 1.9/3.3kV(E), 3.3/3.3kV(UE), 3.8/6.6kV(E), 6.6/6.6kV(UE), 6.35/11kV(E), 11 / 11 kV (UE), 12.7 / 22 kV (E) & 33 kV (E), 33 kV (UE) & 45 kV
- 2) **Relevant Indian Standard** : IS 7098 (Part-2) – 1985 or International standard – IEC-60502 (Part-2), BS-6622 & BS:7835.
- 3) **Number of cores.** : Single & Three.
- 4) **Conductor** : Single & Three.
- 5) **Conductor Material** : with 12 - 35 Sq.mm to 1000 Sq.mm in Single Core Cables & 35 Sq.mm to 400 Sq.mm in 3Core cables.
- 6) **Type of Insulation** : Copper / Aluminium
- 7) **Type of Inner Sheathing** : XLPE
- 8) **Type of Armour** : PVC Wrapped / PVC Extruded.
- 9) **Type of Outer Sheath** : Unarmoured / Strip Armoured / Round Wire Armoured.
- 10) **Length of cable required and drum length.** : PVC / Flame Retardant / Flame Retardant Low Smoke / Zero Halogen (LSOH).

CABLE CONDUCTORS



SPREXO
INTERNATIONAL



Stranded bare copper cable

Cross Section (mm ²)	Number and strand diameter (mm)	Outer diameter (mm)	(Kg/m)
6	7 x 1.07	3.11	0.054
10	7 x 1.43	4.10	0.087
16	7 x 1.71	5.10	0.144
25	7 x 2.13	6.40	0.225
29	19 x 1.40	7	0.267
35	7 x 2.50	7.60	0.305
50	19 x 1.77	9.20	0.420
70	19 x 2.14	10.90	0.610
95	19 x 2.52	12.50	0.830
120	37 x 2.05	14.20	1.065
150	19 x 3.24	15.90	1.260
150	37 x 2.21	16.00	1.260
185	37 x 2.50	17.70	1.620
240	37 x 2.83	19.80	2.200
300	37 x 3.21	22.50	2.650

Flexible tinned copper earth braids

Manufactured from flat tinned Copper Braided Mesh (strands of 15/100 or 20/100mm) with crimped and punched tinned copper connectors at both ends

Earth braid Cross section (mm)	Holes Dia. (mm)		Length between axis (mm) L	Connectors dimensions (mm)		
	D1	D2		A	B	E
10	6.5	6.5	100-300	14	15	3.5
16	8.5	8.5	100-400	17	17	4
25	8.5	8.5	100-500	23	25	4
35	10.5	10.5	100-600	27	25	4.2
50	10.5	10.5	100-500	33	30	5
70	13	13	150-500	32	30	5.5



MISCELLANEOUS CONDUCTORS



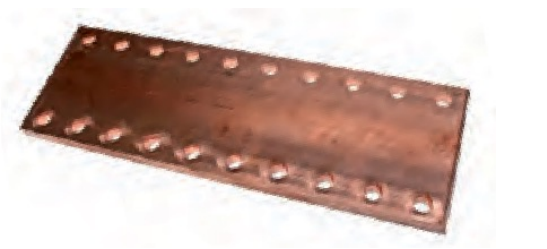
Hard drawn copper bar			
Dimensions (mm)	Material Composition	(Kg/m)	(ml)
25 x 3	Pure copper, 1/2 state, H12 hardness	0.668	3
30 x 4	Pure copper, 1/2 state, H12 hardness	1.068	3
40 x 5	Pure copper, 1/2 state, H12 hardness	1.780	3
50 x 5	Pure copper, 1/2 state, H12 hardness	2.225	3
80 x 5	Pure copper, 1/2 state, H12 hardness	3.56	3
100 x 5	Pure copper, 1/2 state, H12 hardness	4.45	3
100 x 10	Pure copper, 1/2 state, H12 hardness	8.90	3



Perforated copper bars Length of 1750mm				
Dimensions (mm)	Holes dia. (mm)	Distance between axes A (mm)	(Kg)	
Single perforation				
25 x 5	10.5	25	1.66	1
Double perforation				
50 x 5	10.5	25	3.32	1
80 x 5	10.5	25	5.30	1
100 x 5	10.5	25	6.64	1



Threaded copper bars Length of 990mm				
Dimensions (mm)	Holes dia. (mm)	Distance between axes A (mm)	(Kg)	
20 x 5	M6	25	0.76	1
32 x 5	M6	25	1.22	1



On demand manufacturing

We can manufacture a wide range of hard drawn copper or 304/316 stainless steel bars according to your drawings or specifications.



EARTH BARS

Earth Bar:

Various type of Earth Bars are available in our product range.

These are shown in below.

Earth Bar without Disconnecting Link : Copper Earth Bar:

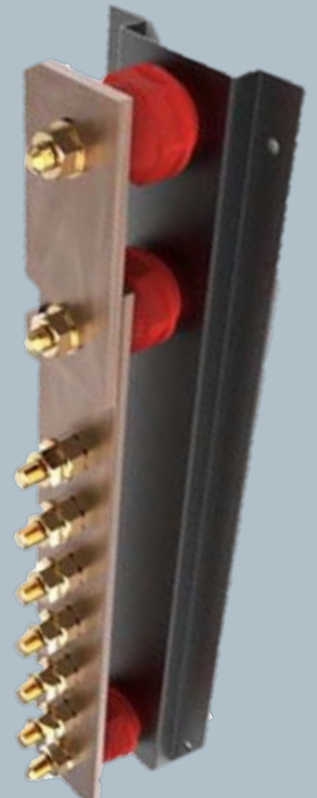
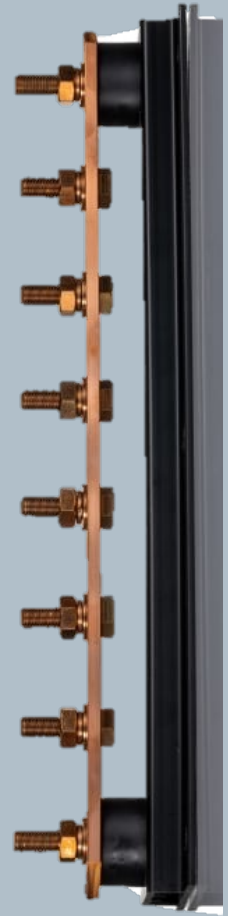
Description	Length
6 way	400mm
8 way	500mm
10 way	650mm
12 way	750mm
14 way	850mm
16 way	950mm
18 way	1050mm
20 way	1200mm
22 way	1300mm
24 way	1400mm
26 way	1500mm
28 way	1650mm
30 way	1750mm

Earth Bar:

Earth Bar with Single Disconnecting Link:

Copper Earth Bar:

Description	Length
6 way	475 mm
8 way	575 mm
10 way	725 mm
12 way	825 mm
14 way	925 mm
16 way	1025 mm
18 way	1125 mm
20 way	1275 mm
22 way	1375 mm
24 way	1475 mm
26 way	1575 mm
28 way	1725 mm
30 way	1825 mm



LIGHTING PROTECTION SYSTEM

During a storm condition the electrical field intensity in the atmosphere increases rapidly and this sudden change is detected by these sensors fitted to the lower part of the terminal. These sensors continuously monitor the electrical field as well as store energy from ambient electrical field for the functioning of internal electronics. The information received through the sensors by the electronic triggering circuit inside the housing of the air terminal triggers an ion magnetic field at the upper series of electrode automatically. This activation of energy is made at the precise time when a downward leader is approaching the ground. This leads to the formation of an upward leader and ensures that the lightning energy is channeled safely down to the low impedance grounding (Earthing) through the purpose designed air terminal through its down conductor network only.

Air Terminal

NFC 17-102 (2011)

IEC 62305:2020



ETLPS ESE 95



ETLPS ESE 65



ETLPS ESE 45

Rp (m) h(m)	SCHIRTEC-AM ($\Delta T: 15 \mu s$)				SCHIRTEC-AS ($\Delta T: 30 \mu s$)				SCHIRTEC-DAS ($\Delta T: 45 \mu s$)				SCHIRTEC-A/DA ($\Delta T: 60 \mu s$)			
	I	II	III	IV	I	II	III	IV	I	II	III	IV	I	II	III	IV
2	13	15	18	20	19	22	25	28	25	28	32	36	31	35	39	43
4	25	27	36	41	38	44	51	57	51	57	64	72	63	69	78	85
5	32	37	45	51	48	55	63	71	63	71	81	89	79	86	97	107
6	32	38	46	52	48	55	64	72	63	71	81	90	79	87	97	107
8	33	39	47	54	49	56	65	73	64	72	82	91	79	87	98	108
10	34	41	49	56	49	57	66	75	64	72	83	92	79	88	99	109
20	35	43	55	63	50	59	71	81	65	74	86	97	80	89	102	113
30	35	45	58	69	50	60	73	85	65	75	89	101	80	90	104	116



Product Description

Digital Lightning Counter Lightning Strike Counter / Recorder Model - ETDLC 1



Model -	ETDLC 1
Nominal Voltage (Un)	90 to 270V AC/DC @ 50/60 Hz
Indicator	0-999999
Counting Current Sensor (rise time $\geq 8\mu s$)	0-999999
Counting max current	150KA (1kHz.)
Installation	Indoor Installation
Enclosure Material	94-V0
Degree of protection	IP20
Dimension (MM)	180x129x127(LxWxH)
Display	LED
Sensor Supply	12VDC @ 30mA ($\pm 10\%$)



Product Description

Solid Copper Bonded Lightning Arrester

Specification - SCB Lightning Arrester multi spike tin coated ss nut bolt 14.5mm x 1mtr long with insulated base plate.



Product Description

Pure Copper Lightning Arrester

Specification - Pure Copper Lightning Arrester multi spike tin coated ss nut bolt 22mm x 2ft long with insulated base plate.



CABLE GLANDS



<p>Design</p>	<p>Gland design & testing philosophy on the performance requirements of BS: 6121 & IP66 as per IS 13947(Part 1), adding any criteria necessary to meet particular specification.</p>
<p>Materials</p>	<p>Glands are manufactured as standard in BRASS. Alternative material includes Aluminium, Mild Steel & Stainless Steel.</p>
<p>Finishes</p>	<p>Brass glands are generally supplied with NICKEL finish and can be supplied with variety of finishes, e.g. TIN or CADNIUM. Further details are available upon request.</p>
<p>Entry Threads</p>	<p>Glands are supplied with B.S.C. threads (ET). Other entry thread forms available are - NPT, PG, PF, BSP METRIC etc.</p>
<p>How to Order</p>	<p>Select appropriate gland from the relevant table by checking the ACTUAL cable dimensions or referring to the SPECIFIED cable.</p>



CABLE LUGS



DESIGN

Entire ranges of copper tubular terminals are made from ETP grade & EC grade aluminum tubes. Terminals are exclusively designed for study performance even on adverse conditions. Unique type test are conducted as per IS 8909 & IS 8337. The range of the terminals & connectors starts from 0.5mm² to 1000mm² with many variations suiting to many industries.

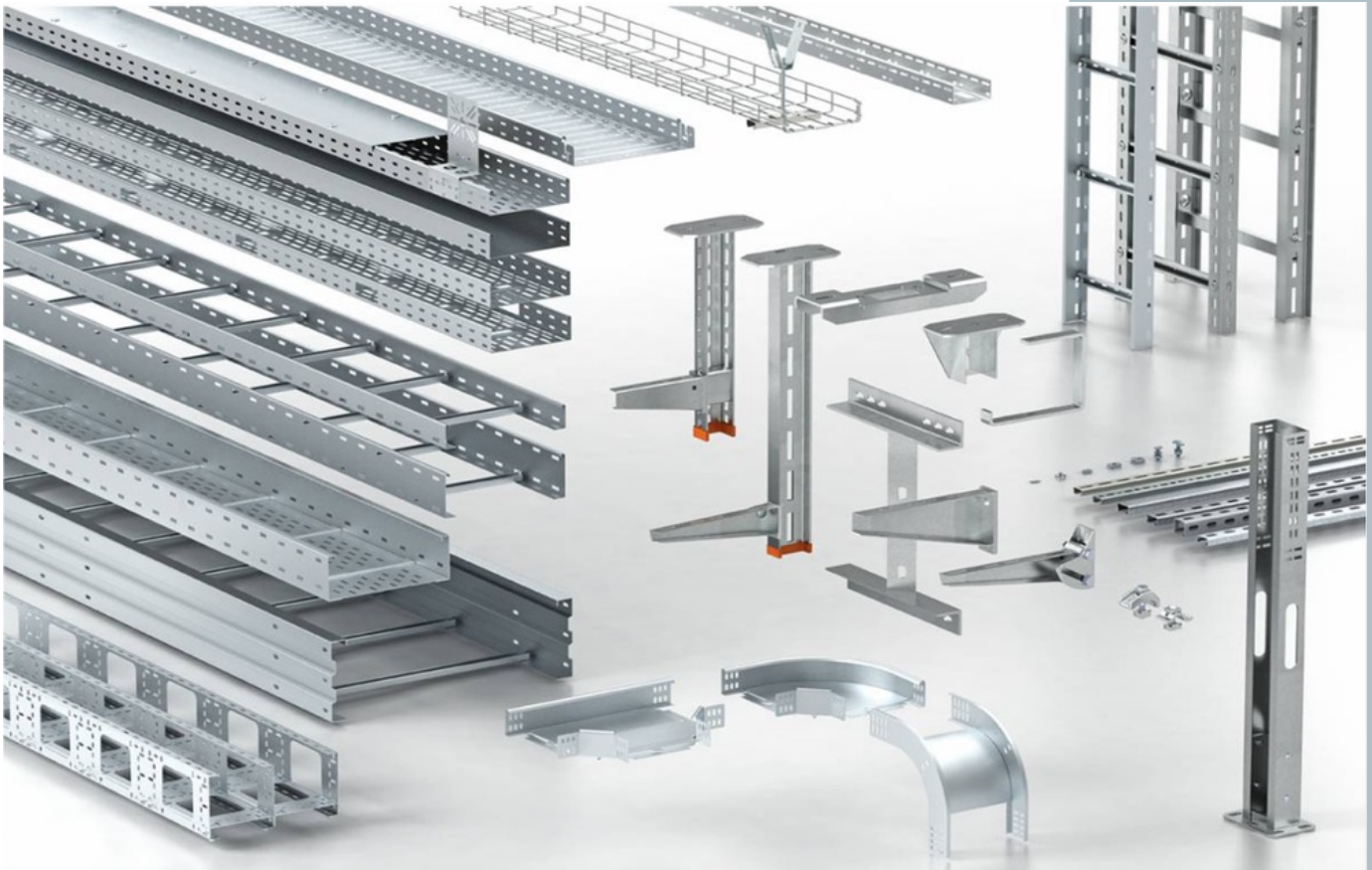
QUALITY

Quality is extremely important in an electrical system. It is maintained by undertaking stage wise inspection, which is always mandatory. Full fledge in house lab.

Inspects raw material & out going finished products as per defined rejection / acceptance methods. Relevant Indian & International standards are maintained by concurrent inspections & close monitoring of quality standards. This will enable the customers to select the terminals as per the specification required.



CABLE TRAYS



A cable tray is a robust structure used to support insulated electrical cables. These trays provide an alternative to open wiring or electrical conduit systems and are commonly used for cable management in commercial and industrial construction. They offer a practical way to route and protect wiring systems efficiently and are essential for maintaining system organization and accessibility.

We manufacture all the accessories for cable trays:

- Cover
- Connectors
- Splice Plates
- Riser
- Cable Ladder
- T-Junctions
- Reducer
- C Channel
- U Channel
- 90 Degree Bend

CABLE TRAYS



Full Specifications of Cable Trays

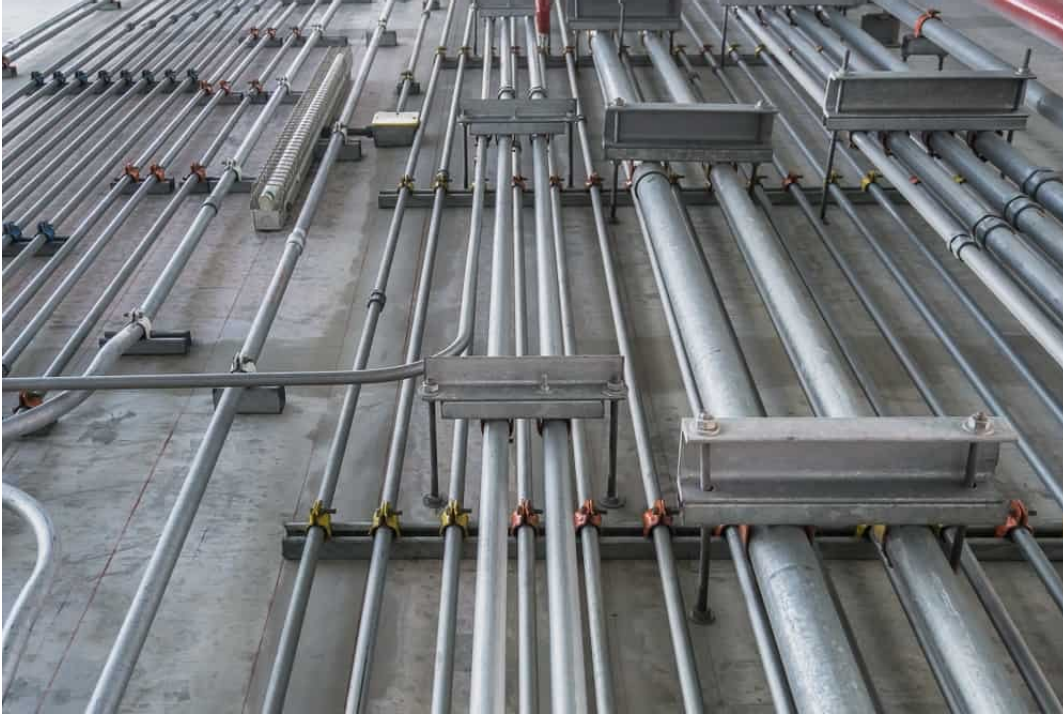
- Dimensions: Various with 12 s to fit all needs
- Load capacity: Engineered to withstand significant weight
- Finishes: Available in galvanized steel, stainless steel, and more
- Standards: Compliant with international standards such as ISO
- Superior quality and durability
- Customization options to meet specific project requirements
- Competitive pricing without compromising on quality

Cable Trays Specifications and Usage Table

TRAY ID	TRAY TYPE	MATERIAL	WIDTH (MM)	HEIGHT (MM)	LENGTH (M)	LOAD CAPACITY (KG/M)	COATING/ FINISH	INSTALLATION TYPE	APPLICATION	NOTES
1	Ladder Tray	Steel	300	50	3	50	Galvanized	Wall-Mounted	Power Cables	Heavy-duty
2	Perforated Tray	Aluminium	200	40	2.5	30	Anodized	Ceiling-Suspended	Low-Voltage Wiring	Light-weight
3	Solid Bottom Tray	Stainless Steel	150	25	2	20	Polished	Underfloor	Data and Communication Cables	Corrosion-resistant
4	Channel Tray	Fiberglass	250	30	3	25	UV Resistant	Outdoor	Solar Panel Cabling	Weather-resistant



CONDUIT PIPES



Pipes are manufactured, from tested raw material, on fully automatic plant by high frequency induction welding systems which ensure perfect welding to ease wire pulling and render strength to the pipe's seam so that any kind of bending job can be carried out.

THREADING

Threading is done on automatic Lanco Chaser threading machine which maintains uniformity of length and pitch of the thread on major and minor diameter.

PROTECTION

Inner and outer surface is treated with special phosphating process.

MEDIUM PROTECTION COATING of the pipe, with Black Stove Enamel, is done by dipping process to ensure proper coating inside and outside of the pipe. The pipes are baked in an Automatic Electric Oven for requisite hardening of paint and gloss finish on the pipe.

HIGH PROTECTION COATING of pipe i.e. Hot Dipped Galvanizing is done by automatic galvanizing plant. The zinc coating inside and outside is maintained in accordance with IS 4736/1986.

DIMENSION AS PER IS 9537 / 1981 PART I AND II

Nominal with 12 of Conduits	Outside Diameter	Tolerance on diameter	Wall Thickness
in mm	in mm	in mm	in mm
16	16	+0, -0.3	1.4 - 1.8
20	20	+0, -0.3	1.4 - 1.8
25	25	+0, -0.4	1.4 - 1.8
32	32	+0, -0.4	1.4 - 1.8
40	40	+0, -0.4	1.6 - 2.2
50	50	+0, -0.5	1.6 - 2.2
63	63	+0, -0.6	1.6 - 2.2



CONDUIT PIPES

BRITISH STANDARDS - BS-4568

Pre-galvanised Steel Conduits - Class 3 • Hot Dip Galvanised Steel Conduit - Class 4

with 12	Outside Diameter		Wall Thickness and + or -	Weight with coupler	Standard Packing
	Minimum	Maximum	mm	kg /mtr	Per Bundle
20 mm	19.7 mm	20.0 mm	1.6 ± 0.15	0.744	25
25 mm	24.6 mm	25.0 mm	1.6 ± 0.15	0.950	20
32 mm	31.6 mm	32.0 mm	1.6 ± 0.15	1.240	10

AMERICAN NATIONAL STANDARD INSTITUTE

EMT (Electrical Metallic Tubing) ANSI – C80.3 (UL 797)

Trade with 12	Outside Diameter	Approx. Inside Diameter	Min. Wall Thickness	Standard Weight	Length
inch	mm	mm	mm	mm	mm
½	17.93	15.80	1.07	0.424	3048
¾	23.42	20.93	1.25	0.647	3048
1	29.54	26.64	1.45	0.952	3048
1-¼	38.35	35.05	1.65	1.414	3048
1-½	44.20	48.89	1.65	1.637	3048
2	55.80	52.50	1.65	2.083	3048

IMC (INTERMEDIATE METAL CONDUIT) ANSI – C80.6

Trade with 12	Outside Diameter			Length w/o coupling	Min. Wall	Nominal wt. per 100ft (30.79mtrs)
	Nominal	Minimum	Maximum			
	mm	mm	mm	mm	mm	mm
½	20.70	20.60	20.80	3029.0	1.78	28.10
¾	26.10	26.00	26.30	3029.0	1.91	38.70
1	32.80	32.60	32.90	3022.6	2.16	56.90
1-¼	41.60	41.40	41.80	3022.6	2.16	73.50
1-½	47.80	47.60	48.00	3022.6	2.29	85.20
2	59.90	59.70	60.10	3022.6	2.41	114.10

RMC (RIGID METAL CONDUITS) ANSI – C80.1 (UL 6)

Trade with 12	Metric Designator	Threads per inch.	Finished Conduits	Nominal wt. per 100 ft (30.79mtrs)	Nominal outside diameter	Nominal inside diameter	Nominal wall diameter
					mm	mm	mm
½	16	14	3030	37.20	21.34	16.05	2.64
¾	21	14	3030	49.44	26.67	21.23	2.72
1	27	11½	3025	37.03	33.40	27.00	3.20
1-¼	35	11½	3025	98.88	42.16	35.41	3.38
1-½	41	11½	3025	119.30	48.26	41.25	3.51
2	53	11½	3025	158.76	60.33	52.91	3.71

FINISHED - HOT DIPPED GALVANISED / PRE GALVANISED

CONDUIT PIPES



ACCESSORIES

INSPECTION BEND



Size : 20mm - 50mm

NORMAL / SOLID BEND



Size : 20mm - 50mm

INSPECTION COUPLER



Size : 20mm - 50mm

SOILD ELBOW



Size : 20mm - 50mm

**JUNCTION / CIRCULAR BOX
(ANGLE - 2WAY)**



Size : 20mm - 50mm

**JUNCTION / CIRCULAR BOX
(TEE - 3WAY)**



Size : 20mm - 50mm

**JUNCTION / CIRCULAR BOX
(2WAY)**



Size : 20mm - 50mm

**JUNCTION / CIRCULAR BOX
(‘U’ - 2WAY)**



Size : 20mm - 50mm

**JUNCTION / CIRCULAR BOX
(‘Y’ - 3WAY)**



Size : 20mm - 50mm

LOCKING NUTS



Size : 20mm - 50mm

DISTANCE SADDLE



Size : 20mm - 50mm

**MALE / FEMALE BUSH
(BRASS)**



Size : 20mm - 50mm



JUNCTION BOX



We have a range of Junction Boxes material ABS, which offers superior resistance to chemicals and atmospheric agents. Available with Smooth Walls, Membranes and Nipples to allow wire entry, these junction boxes offer IP65 protection by means of the silicon rubber gasketing. They are available with press- on type, screw type and hinge type lids which may be grey in colour or transparent.

Features :

- Shockproof and rustproof
 - Rotproof and termite resistant
 - Cable entry from bottom and/or sides
 - 100% weatherproof
 - Pole mounting arrangement
 - Tamper proof
 - Pilferage proof
 - Restricts unauthorized tapping
 - Maintenance-free
- ✓ Integrated junction box consisting of cable glands and a terminal block.
 - ✓ Suitable for industrial facilities, power cable joints, relay between motors and/or sensors.
 - ✓ IP65 protection class with high oil resistant PBT material.
 - ✓ 3, 4, and 6 pole types are available.
 - ✓ $\Phi 5.0$ and $\Phi 7.4$ rubber cable bushes (2 pcs each) are included.





OCTOGONAL LIGHT POLES:



Street structure

Designing is based on BSEN 40-3-3:2003 A tested for stability by using application softwares. Location of installation terrain category & wind speed are important factors for stability check. All these factors are as per IS 8T5 or as per customer requirements.

Raw material is procured as per BSEN 10025 / IS 2062 & galvanized as per BSEN ISO 1461.

We produce hot dip galvanized as well as painted polygonal & conical poles which can be used for illumination, power distribution, signaling etc. The poles are provided with different types of brackets & customized accessories depending upon the application.

Octagonal Street Light Poles - Technical Specifications

Description	Top Dia. (mm)	Bottom Dia. (mm)	Sheet Thickness (mm)	Base Plate Dimensions (LxBxT)
3M Octagonal Pole	70	130	3	200x200x12
4M Octagonal Pole	70	130	3	200x200x12
5M Octagonal Pole	70	130	3	200x200x12
6M Octagonal Pole	70	130	3	200x200x12
7M Octagonal Pole	70	130	3	200x200x12
8M Octagonal Pole	70	130	3	200x200x16
8M Octagonal Pole	70	155	3	250x250x16
9M Octagonal Pole	70	130	3	200x200x16
9M Octagonal Pole	70	155	3	250x250x16
9M Octagonal Pole	70	175	3	275x275x16
10M Octagonal Pole	70	130	3	200x200x16
10M Octagonal Pole	70	155	3	250x250x16
10M Octagonal Pole	70	175	3	275x275x16
11M Octagonal Pole	70	155	3	250x250x16
11M Octagonal Pole	70	175	3	275x275x16
11M Octagonal Pole	90	210	3	300x300x16
12M Octagonal Pole	70	175	3	275x275x16
12M Octagonal Pole	90	210	3	300x300x16





SWAGED TUBULAR POLES:



We Manufacture Swaged Poles From 5 Metres To 16 Metres As Per The Highest Quality Standards Of Is: 2713 / Bs 4360 And Customized For Specific Applications..

We Offers Galvanized / Painted Swaged Poles As Per Customer Requirements. Our Product Range Includes Light Poles In Single Hang And Double Hangs, Street Light Poles And Traffic Light Poles Among Others That Are Made Of Erw Tubes Of Suitable Lengths Swaged And Joined Together.

ADVANTAGES OF SWAGED TUBULAR STEEL POLES:

Wind load: due to curvature of the surface wind load is only about 60% of flat surface.

Strength: due to uniform distribution of metal in the cross section tubular poles gives the same strength in every direction

Corrosion resistance: due to smooth surface tubular poles has minimum liability to corrosion.

Fireproof, immune to insect infestation and no pole rot Weighs 50-70% less than comparable concrete structures

Scope of Customization Elongation - up to 85% with no shrinkage

Free of copper wire grounding

APPLICATIONS

Street lighting

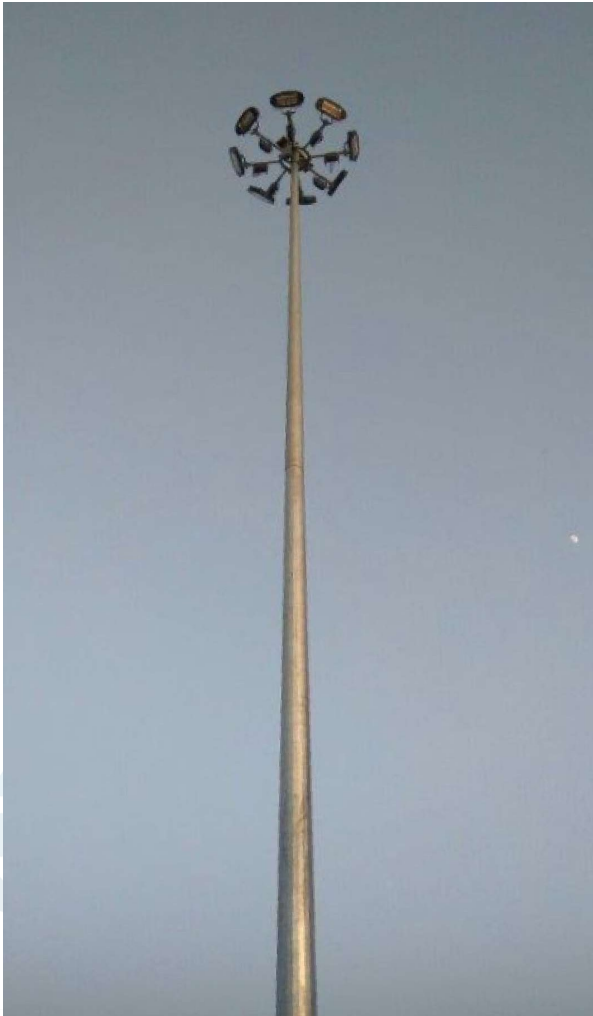
Traffic signals

LT line.





HIGH MAST LIGHTING SYSTEM:



- We designs and manufacture BEST in class HIGH MAST lighting Systems from 10m to 50m for India and Global markets widely used in exterior lighting applications in Cities, Industries, Highways, Ports, etc
- Fabricated Masts sections are continuously tapered 16/18/20 sided cross sections for dove-tailed assembly conforming to BS EN 10025, customer specifications and design as per IS 875 pt III 2015, TR7, PLG 07 and other international design standards. WIND TUNNEL tested design and type tested 30m High Mast for full scale loading
- HR Coils are uncoiled, cold cut and sheared by CNC machines for accuracy and no stress in the plate
- Fabricated mast sections are single dip hot dip galvanized in a 14.3m galvanizing bath for galvanization thickness as perBS EN ISO 1461 or customer specification
- Head frame Capping section houses pulley arrangement with guides and stops for safe operation of wire-ropes
- Hot dip galvanized Tubes and MS Channel are used for Lantern carriage designs as per Flood lights quantities and arrangements
- The bottom segment have designed base plates and strengthening gussets as per IS 2062 and IS 226
- Vandal resistant, weather proof lockable access door at the mast base for parts like Winch, electrical Motor, internal Trailing Cable, Control SwitchCable.ONAL
- LM6 alloy pulley system with special self-lubricated bush-bearings on SS shafts
- Wire-ropes (GI or SS) of required lengths are with copper alloy talurits and steel thimbles for ease of assembly
- Heavy duty single/double drum WINCH, powered ELECTRIC MOTOR
- EPR/PCP sheathed copper trailing cable with plug-socket arrangement designed (Optional Telecom and Power Cable combination and arrangement available)
- Quality accessories viz. Foundation bolts, anchor plates, etc by us ensures safe installation Specially designed additional accessories used to avoid entanglement between wire ropes and cables

• Applications:

- Exterior Areas
- Security Lighting
- Airport Apron Lighting
- Sea Port Lighting
- Container & Railway Yards,
- METRO Depots, CAR Parking
- City Junctions & Flyovers on
- Highways & Expressways, etc





SPREXO
INTERNATIONAL



SPREXO
INTERNATIONAL

CONTACT US AT:

MUMBAI :

JAI MAHARASHTRA OWNERS ASSOCIATION
SECTOR-9 VASHI,NAVI MUMBAI.

Mumbai – 400 078 (M.S)

Email :

sprexointernational@gmail.com

info@sprexointernational.com

Mobile :

+91-8275288056, +91-9028445377

Website :

www.sprexointernational.com

